



- 4 and 6 Seater
- 4 and 6 Lifted
- All Model Years

# PULSE USER MANUAL



(866) 542-8677



[support@bintelli.com](mailto:support@bintelli.com)

## Introduction

Welcome to the family! Your comfort and safety are very important to us. We strongly recommend that you read and follow the operating instructions in this manual to avoid serious personal injury. Please make sure anyone operating your vehicle is familiar with the cart's functions.

ActivEV continually seeks advancements in product design and quality. Therefore, while this manual contains the most current product information, please keep in mind that there may be minor discrepancies between the manual and your actual golf cart. If you have any questions about your vehicle, please contact us or an authorized ActivEV dealership.

## Security Statements

Please pay close attention to the statements marked as “**Warning**”, “**Danger**”, and “**Caution**”. If any operating or safety warning sign on the vehicle is damaged, peeling, or blurred, it should be replaced immediately to prevent property damage, personal injury, or death.

This vehicle is limited to a certain number of passengers (including the driver). The number of passengers depends on the specific model, i.e. 4PR, and 6PR.

### Warning

Failure to comply with all safety warnings may cause bodily injury to the vehicle operator and/or passengers.

- Keep your entire body in the vehicle when in motion.
- Do not operate while under the influence of drugs or alcohol.
- Make sure all passengers are securely seated before driving.
- Engage the parking brake when the cart is parked or unattended.

### Danger

The batteries in your vehicle are capable of delivering large levels of power that can cause injury and even death. For your safety, never smoke near the vehicle. It should be stored away from sparks or flames. Only use the appropriate charger for your vehicle. Always wear eye protection, protective clothing, and gloves when working on or near the battery.

## Operating the Vehicle

Contact your local DMV for rules and regulations regarding who may legally operate the vehicle. Switch the RUN/OFF/EMB switch to the “Run” position. Make sure the Forward/Reverse switch is switched to Neutral before switching the ignition to “On”. Do not forget to disengage the parking brake. Once “On” switch the Forward/Reverse switch to the appropriate position.

### Caution

Do **NOT** shift from Forward or Reverse while the vehicle is moving.

***Please note your vehicle has regenerative braking and will start slowing down when the accelerator is not pressed.***

Exercise caution in areas such as:

- Steep slopes
- Sharp bends
- Blind spots
- Wet or icy ground

Keep your entire body inside the vehicle, keep seated, and hold on while the vehicle is moving.

Do not start the vehicle until all occupants are securely seated.

Do not start the vehicle until the power has been unplugged.

Keep your hands on the steering wheel and your eyes on the path you are going.

Always back up slowly and watch the back carefully.

Avoid starting or stopping the vehicle suddenly.

Avoid turning the steering wheel too sharply at high speed.

Always drive slowly up or down any incline.

Do not make any modifications or additions which may affect the capacity or safety of the vehicle.

### Caution

Children should not be permitted to play in the vehicle. Children should be seated between or next to an adult and protected by them when the vehicle is moving.

## Safe Operation Instructions

Our vehicles are designed for simple operations. However, please make sure to observe the following safe operation instructions. As with any new vehicle, always familiarize yourself with its controls. Perform checks on the battery, tires (recommended tire pressure is 30 psi), body/chassis, brakes, parking brake, and steering prior to operating the vehicle.

### Caution

Always ensure that the key is removed before performing any of the above checks.

- Only authorized people should drive this vehicle, and from the driver's side only.
- Do not drive this vehicle on any public roads before it is registered and has the license plate attached.
- Only drive this vehicle where you are allowed by law or local regulations.
- Do not overload the vehicle, otherwise, the motor may be damaged, or the vehicle will lose control, putting the driver and passengers in danger.
- Do not operate the vehicle under the influence of alcohol or drugs.
- Do not attempt to go uphill/slopes beyond its grade ability.
- Do not pass other vehicles at crossroads, blind areas, or any dangerous conditions.
- **ALWAYS** engage the parking brake when getting out of your vehicle.





## About Your Vehicle

### Vehicle Identification Number (VIN)

Whether your vehicle includes a VIN depends on how your dealership is licensed. If a VIN is present, it will be located beneath the center of the dashboard, near the ignition area. Please refer to the image below to see what the VIN plate looks like.



### Chassis Number (Serial Number)

The chassis number, also known as the serial number, can be found in two locations and this number serves as the unique identifier for your unit.

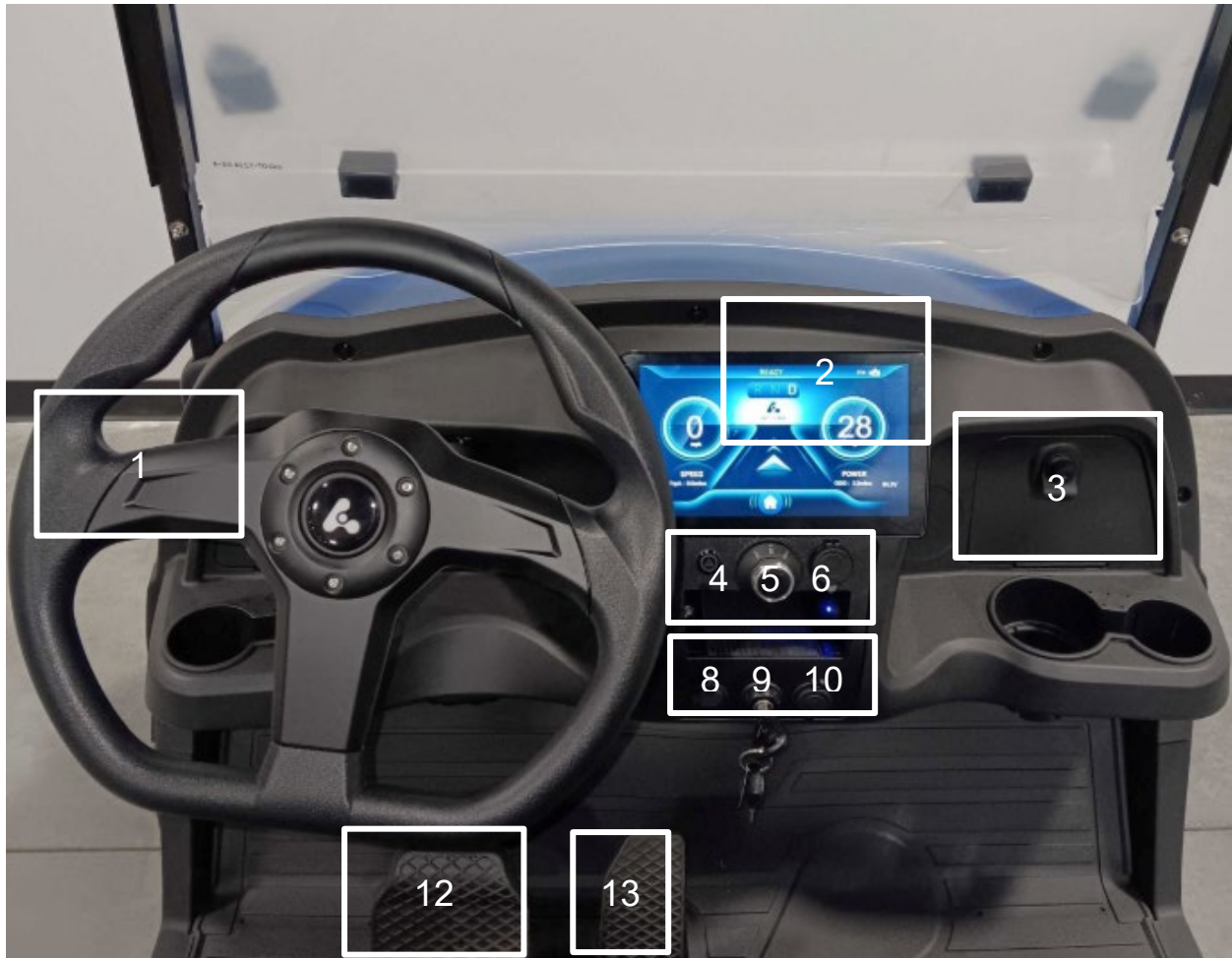
- On the rear driver's side, behind the rear wheel, attached to the suspension (see picture).



- Under the floor mat on the front passenger side (see picture).



## Dash Controls



1. Combinations Switch **\*\*See page 9 for the breakdown controls\*\***
2. LCD Screen **\*\*See page 7 for the breakdown of the LCD Screen\*\***
3. Locking Glove Box
4. Hazard Light Switch
5. Gear Selector
6. USBC and USB 3.0 Port
7. Auxiliary Switches **\*\*Located inside the storage compartment underneath the Gear Selector\*\***
8. USB Port
9. Ignition
10. Power Outlet
11. Speakers **\*\*Located underneath the dash\*\***
12. Brake Pedal
13. Accelerator Pedal

## LCD Screen

As shown in the picture above, the screen is used to display the status of the vehicle, as well as control the radio. All the icons below can be seen on the LCD Screen.



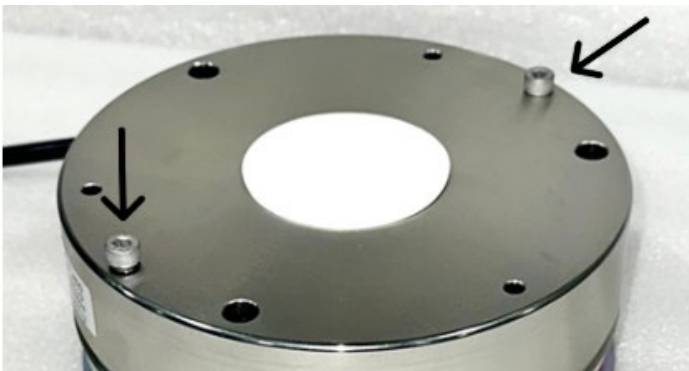
- **Power Button**
- **Home Icon**
  - Goes between the instrument screen which shows speed and power and the main home screen.
- **Microphone Icon**
  - Used when your phone is connected to the cart to make calls.
- **Volume Up/Down**
- **Settings**
  - Can be accessed from the home screen
  - From the settings you can set your **time**, **sound**, and **general** settings and change your **wallpaper**

## RUN/OFF/EMB Switch



The **RUN/OFF/EMB** switch is located under the seat where the battery compartment. Before using the car, ensure the switch is in the “**Run**” position. When storing or working on the unit place the cart in OFF position. When towing or pushing the cart, toggle to “**EMB**” position. “**EMB**” releases the emergency brake, allowing the cart to move. **Please note:** The cart’s battery must have power for the **EMB** feature to work properly.

### Disengaging the EMB



To disengage the **EMB**, locate the two 4 mm Allen head screws on the motor. These screws sit finger-tight at rest. To release the parking brake, tighten both screws, which pulls the plate away from the motor. Always keep a 4 mm Allen key handy for this procedure.

### Warning

Never push or tow the vehicle while the key is in the “Run” position, doing so can cause severe damage to the motor and electrical components, posing a significant fire hazard.

In the event the battery is dead, please follow the manual release procedure to safely move the cart without risking damage.



## Combination Switch

- Turn Signal
  - Push up to turn on the right turn signal.
  - Push down to turn on the left turn signal.
- Headlights
  - Running Lights
    - Turn the dial once.
  - Low Beams
    - Turn the dial twice.
  - High Beams
    - Pull towards the driver's seat.
- Horn
  - Push in to activate the horn.



## Radio



1. **BAND** Switches from FM1 to FM2 etc.
2. **EQ** Equalizer for loudness and base
3. **AS/PS** Alternative Frequency/Program Service
4. **LOC(DX)** Changes between local and distant radio frequencies
5. **GOTO** Brings up input frequency

Instructions for Bluetooth: Click on the home button to bring up the main screen. Select the “Phone” function to connect your phone to Bluetooth. Go to your phone's Bluetooth settings and wait for “Pulse” to come up as one of the options. Once connected you should see the Bluetooth sign next to the time in the top right corner.

## Storing and Charging

If the vehicle needs to be stored for an extended period, perform the following actions:

- Fully charge the battery system.
- Turn the “**RUN/OFF/EMB**” switch to the “**OFF**” position.
- Remove the key and keep it in a safe place.
- Ensure each tire is reading 20-25 psi.
- Clean the body, seats, battery box, and chassis.
- If storing outdoors, cover the vehicle with a storage cover.
- Plug in the onboard smart charger and leave it plugged in.

### Caution

When the temperature where the vehicle is stored reaches higher than 95°F. If the temperature reaches 0°F, always keep the batteries fully charged to prevent the battery from freezing, resulting in loss of battery life.



## Maintenance

The appropriate care must be used when performing maintenance, service, or accessory installation. Only trained technicians should service or repair the vehicle and/or battery charging system. Anyone doing even simple repairs or services should have knowledge and experience in electrical and mechanical repairs.

### Important Notice

Before performing any maintenance to the batteries, it's essential to cut all power to the vehicle. **To turn off the power supply, make sure the cart is in park, turn the RUN/OFF/EMB switch to EMB for tow position**, and remove the key from the ignition. Once this has been completed, routine maintenance may begin.

Always keep sparks and Flames away from batteries including smoking. If you come in direct contact with the acid in the batteries, flush with large amounts of water.

- When maintaining the vehicle or batteries, do not wear loose clothing or conductive jewelry such as rings, watches, and brackets.
- Insulated tools need to be used when working near the battery or power connections to prevent the cart from short-circuiting.
- Before working under the cart, make sure the parking brake is on, the cart is switched into the "EWB" position also known as tow position, and the key is removed from the ignition.
- Please keep all signs, warnings, and instructions provided by the manufacturer clear and untampered.

## Lithium Battery Care

- Cleaning cables and ensuring the surface is free of moisture and debris.
- Checking cables and securing connections to the Battery.
- Recharging batteries.
- Monitoring inactivity, long-term storage, and colder temperatures.

### Warning

Do not touch or attempt to secure the terminal connection until the power is completely shut off to the vehicle. To disengage power, turn the RUN/OFF/EMB switch to EMB for towing position, remove the key, locate the power button on the lithium battery and switch it off.

The Power switch on the battery must be **OFF** before any interaction.

## Lithium Battery Features

These vehicles come standard with Lithium batteries systems. Here is the recommended battery maintenance. Lithium batteries are sealed and essentially maintenance free. While there is no fluid to add to the battery pack as you would a deep cycle battery, you still need to periodically check the cables and connections for tightness, ensure they are free of corrosion, recharge, and comprehend temperature and storage conditions.



### Warning

Only licensed technicians should be performing maintenance on batteries except for checking and cleaning terminals while the batteries and vehicle are fully powered off. Please contact your local dealer or Eco Support for anything other than routine battery care.



## Power Button

Located on the side of the lithium battery. This feature is used for powering the batteries. If the power is not on, the cart will not run. This component is also important when performing maintenance to turn power off.

*For Lithium batteries with the supportive charger being Lester, the state of charge reading will be on the speedometer LCD meter.*

POWER  
BUTTON



It's important to be aware that improper management will void manufacturers' warranty and cause further issues with the service of your vehicle. For details regarding proper care and function, please visit the Eco battery manual link.

## Lithium Resources

Registering Eco Battery- 90 days after purchase for 8-year warranty [Eco battery registration](#)

Submitting Warranty Claims- [Eco Battery Warranty Claims](#)

Eco Battery Support- [support@ecobattery.com](mailto:support@ecobattery.com)

### **Important Notice - Eco Battery**

If the battery does not receive more than 4.5amp of draw or charge within a 24 hour period while the battery is under 20% of power, it will enter sleep mode. A battery with 21%-100% power will enter sleep mode if it does not receive more than 4.5amp of draw or charge within a 7 day period.

## Regular Maintenance Checklist

C=Check, CA=Check/Adjust, R=Replace, S=Perform, CL=Clean/Lubricate						
	Before Use	Every month/20 hours/100 miles	Every 6 months/125 hours/600 miles	Every year/250 hours/1200 miles	Every 2 years/500 hours/2500 miles	Every 4 years/1000 hours/5000 miles
Battery Charger	S	S	S	S	S	S
Clean battery	S	S	S	S	S	S
Check brakes	C	CA	CA	CA	CA	CA
Check Steering	C	C	C	C	C	C
Check tires	C	CA	CA	CA	CA	CA
Check body	C	C	C	C	C	C
Battery discharge test				S	S	S
Replace rear axle lubricant				R	R	R
Clean and lubricate pedals		CL				

For additional questions and customer support, please contact your local dealer or Bintelli directly.